

Electronic Supplementary Material

Attenuated phenotypes and analysis of a herpes simplex virus 1 strain with partial deletion of the *UL7*, *UL41* and *LAT* genes

Xingli Xu[#], Yingqiu Guo[#], Shengtao Fan, Pingfang Cui, Min Feng, Lichun Wang, Ying Zhang, Yun Liao, Xiaolong Zhang, Qihan Li[✉]

Institute of Medical Biology, Chinese Academy of Medical Sciences and Peking Union Medical College, Yunnan Key Laboratory of Vaccine Research and Development of Severe Infectious Disease, Kunming 650118, China

Supporting information to DOI: 10.1007/s12250-017-3947-1

Table S1. DNA sequences of g-RNAs and primers used for PCR

Primer name	Assay	Genomic target	Primer sequence (5' to 3')
UL41-1 top	PX330-UL41-1 construct	<i>UL41</i>	CACCGGCCGTCCCCCGGGTCCCCG
UL41-1 bottom			AAACCGGGGACCCGGGGGACGGCC
UL41-2 top	PX330-UL41-2 construct	<i>UL41</i>	CACCGGGTCTGGAGTCGGTGATGG
UL41-2 bottom			AAACCCATCACCGACTCCAGACCC
UL41-F	PCR	<i>UL41</i>	GTGTTGGTGTGATAGAGTT
UL41-R			CCGATCCGCAGTTACAAT
LAT-1 top	PX330-LAT-1 construct	<i>LAT</i>	CACCATGCTTGGGTCTTACTGCCT
LAT-1 bottom			AAACAGGCAGTAAGACCCAAGCAT
LAT-2 top	PX330-LAT-2 construct	<i>LAT</i>	CACCGGGGGTGTATCTCTGGCACGC
LAT-2 bottom			AAACGCGTGCCAGAGATCACCCCC
LAT-F	PCR	<i>LAT</i>	TGTCGTTCAACAAAGACGCCGCGTTTC
LAT-R			ACCCAGGCATGCTCGGTGGTATGAAGGA
UL7-sense	PCR	<i>UL7</i>	AGATCGCGGTGCGCCGGAAGAAGT
UL7-antisense			AGTTCTCCAGGTACATCAGCAGACA

Table S2. Primers used for plasmid construction and qPCR

Primer name	Assay	Genomic target	Primer sequence (5' to 3')
UL30-F	Absolute quantification RT-PCR	UL30	CATCACCGACCCGGAGAGGGAC
UL30-R			GGGCCAGGCGCTTGTGGTGTGA
TaqMan probe			5'-6FAM-CCGCCGAAGTCTGAGCAG ACACCCGCGC-TAMRA
LAT-intron-F	Relative quantification RT-PCR	LAT	GGTCGGACGGGTAAGTAACAGAGT
LAT-intron-R			CGCCCCAGAGGCTAAGGT
RS1-QF	Relative quantification RT-PCR	RS1	CTGCTGGCCTCCATGGTAGA
RS1-QR			TCATCGTCGTCGGCTCGAA
GAPDH-QF	Relative quantification RT-PCR	GAPDH	GGTGAAGGTCGGTGTGAACG
GAPDH-QR			CTCGCTCCTGGAAGATGGTG
LAT-probe	<i>In situ</i> hybridization	LAT	CATAGAGAGCCAGGCACAAAAACAC-Dig

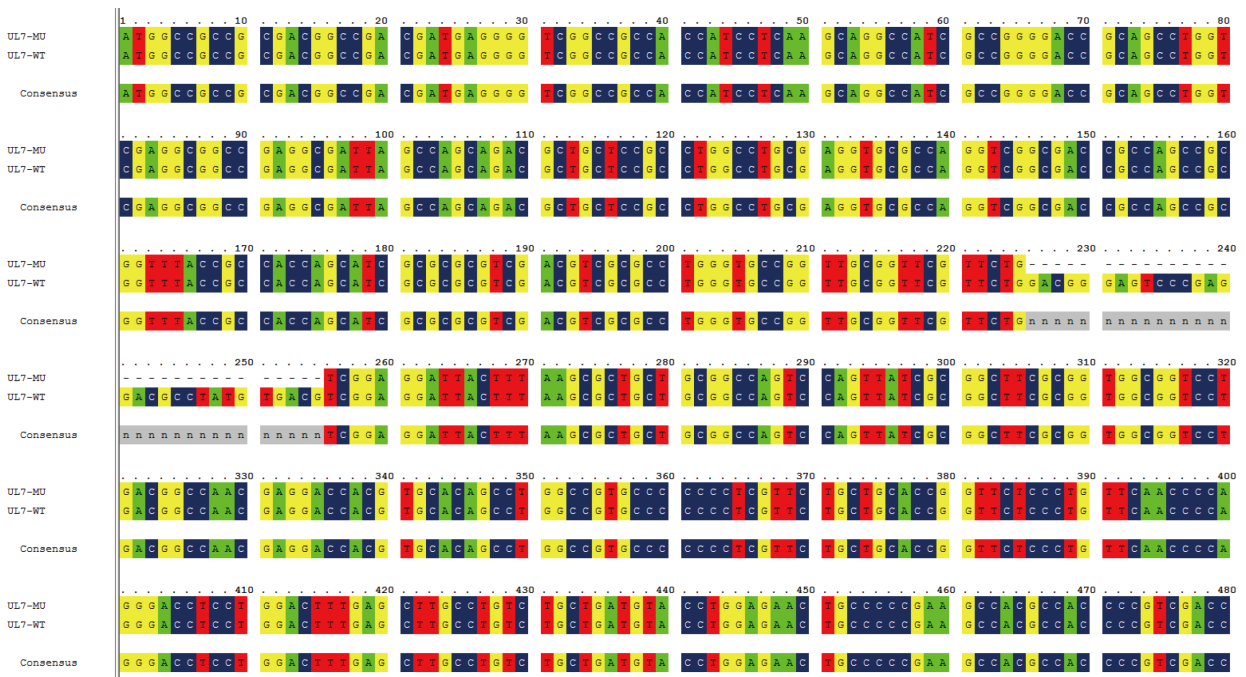


Figure S1. *UL7* gene sequence alignment results

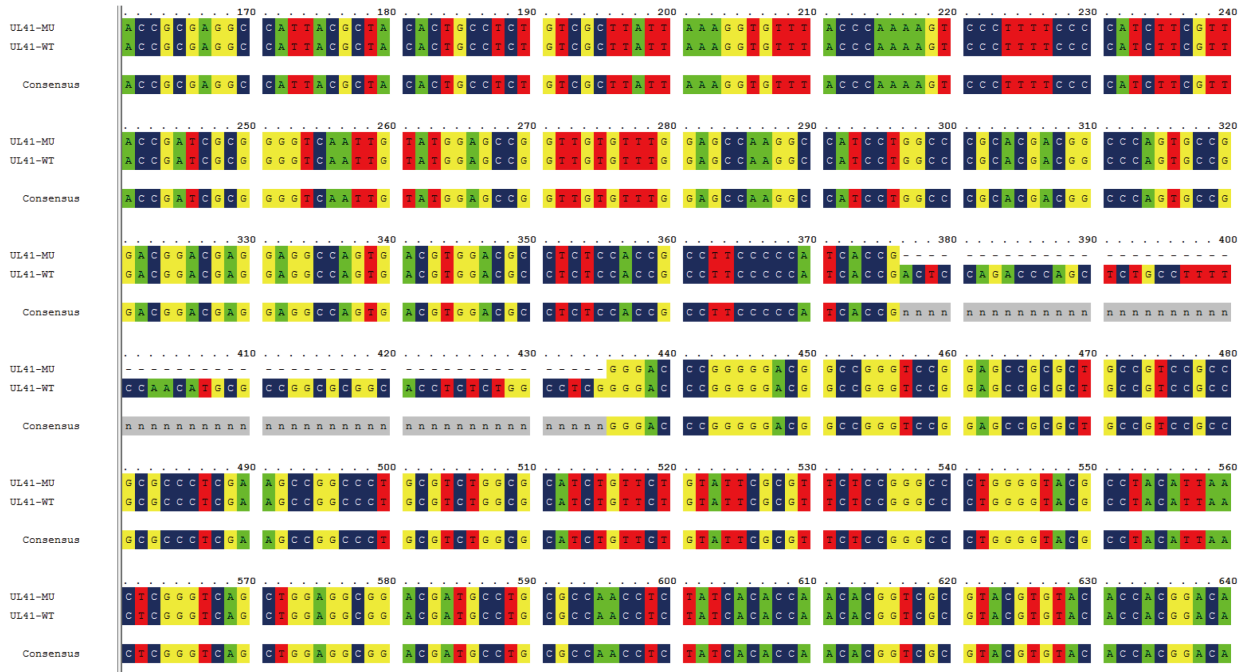


Figure S2. *UL41* gene sequence alignment results

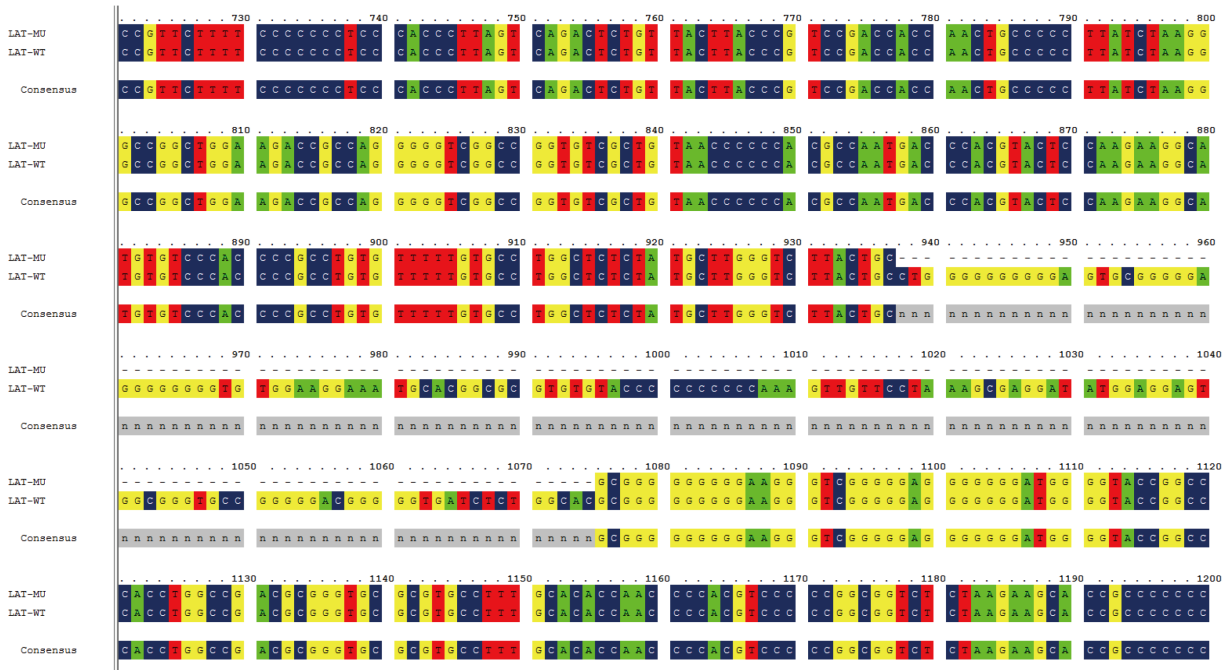


Figure S3. *LAT* gene sequence alignment results