

Electronic Supplementary Material

Phenotypic Characterization of Porcine IFN γ -Producing Lymphocytes in Porcine Reproductive and Respiratory Syndrome Virus Vaccinated and Challenged Pigs

Xiangdong Li^{2,3†}, Zengyang Pei^{3,5†}, Yilin Bai^{4†}, Lihua Wang³, Jishu Shi^{3,✉}, Kegong Tian^{1,2,6,✉}

1. College of Animal Science and Veterinary Medicine, Henan Agricultural University, Zhengzhou 450002, China

2. National Research Center for Veterinary Medicine, High-Tech District, Luoyang 471003, China

3. Department of Anatomy and Physiology, College of Veterinary Medicine, Kansas State University, Manhattan 66506, USA

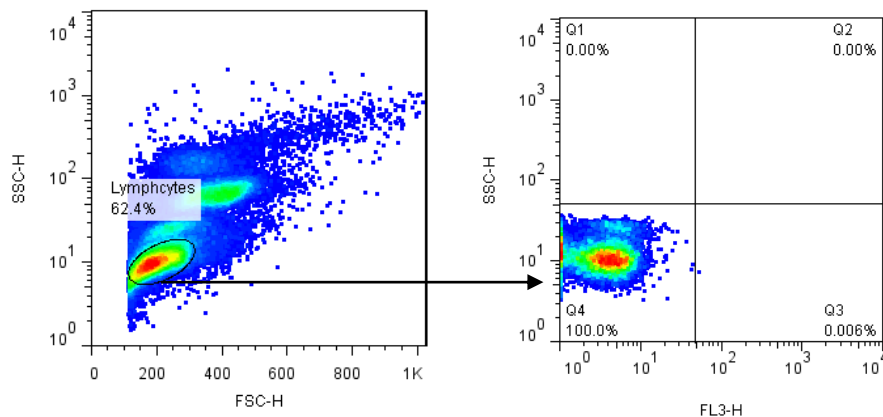
4. College of Veterinary Medicine, Northwest A&F University, Yangling 712100, China

5. Department of Veterinary Medicine, College of Animal Science, Zhejiang University, Hangzhou 310058, China

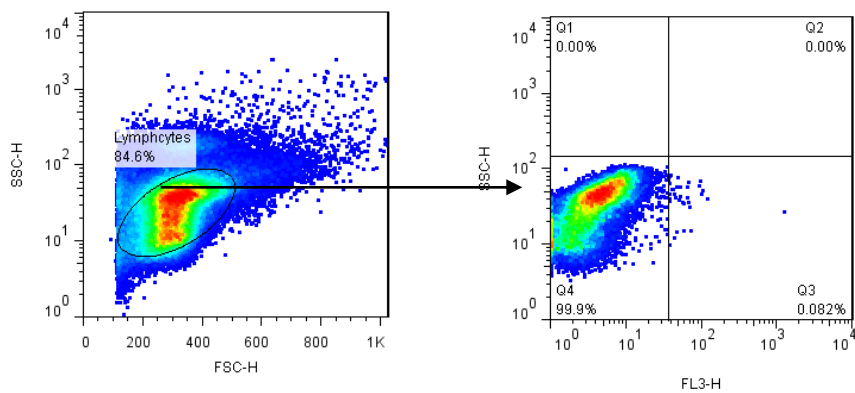
6. OIE Porcine Reproductive and Respiratory Syndrome Reference Laboratory, China Animal Disease Control Center, Beijing 100125, China

Supporting information to DOI: 10.1007/s12250-018-0073-7

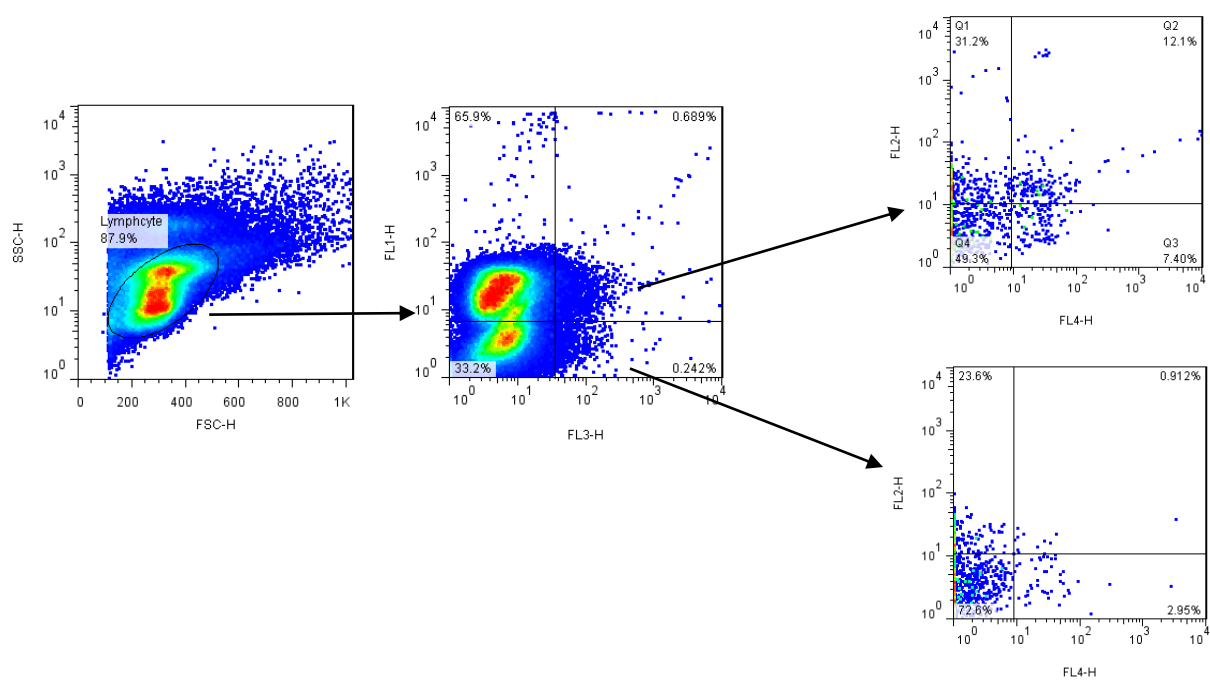
A



B



C



D

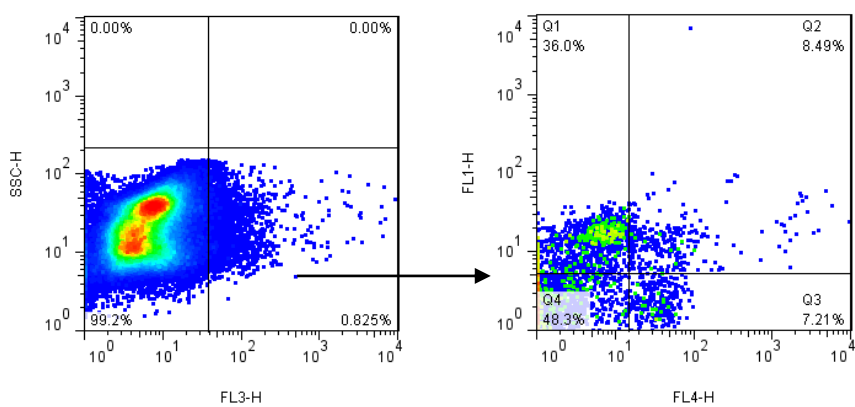


Fig. 1 Representative flowcytometry profiles of different IFN γ -secreting cell populations. **(A)** Naïve pig control without porcine reproductive and respiratory syndrome virus (PRRSV) re-stimulation. **(B)** Naïve pig blood with PRRSV re-stimulation. **(C)** The IFN γ -secreting CD4⁺, CD8⁺, CD4⁺CD8⁺ and NK cell populations (four-color straining protocol). PRRSV-vaccinated pig blood was re-stimulated with inactivated PRRSV. Lymphocytes were first gated by CD3 (FL1) and IFN γ (FL3) to delineate the CD3⁺IFN γ -secreting population and CD3⁻IFN γ -secreting population. The above two populations were further gated by CD4 (FL2) and CD8 (FL4) to delineate IFN γ -secreting CD4⁺, CD8⁺, CD4⁺CD8⁺, and NK cell populations. **(D)** IFN γ -secreting $\gamma\delta$ T cell population (three-color straining protocol). IFN γ -secreting cells were first gated (FL3). IFN γ ⁺ lymphocytes were further gated by CD8 (FL1) and $\gamma\delta$ (FL4).