

Electronic Supplementary Material

PD1⁺CCR2⁺CD8⁺ T cells Infiltrate the Central Nervous System during Acute Japanese Encephalitis Virus Infection

Fang Zhang^{1,2#}, Linlin Qi^{1,2#}, Tong Li^{1,2}, Xiaojing Li¹, Dan Yang^{1,2}, Shengbo Cao³, Jing Ye³✉, Bin Wei^{1,2,4}✉

1 State Key Laboratory of Virology, Wuhan Institute of Virology, Chinese Academy of Sciences, Wuhan 430071, China

2 University of Chinese Academy of Science, Beijing 100049, China

3 State Key Laboratory of Agricultural Microbiology, Huazhong Agricultural University, Wuhan 430070, China

4 School of Life Sciences, Shanghai University, Shanghai 200444, China

Supporting information to DOI: 10.1007/s12250-019-00134-z

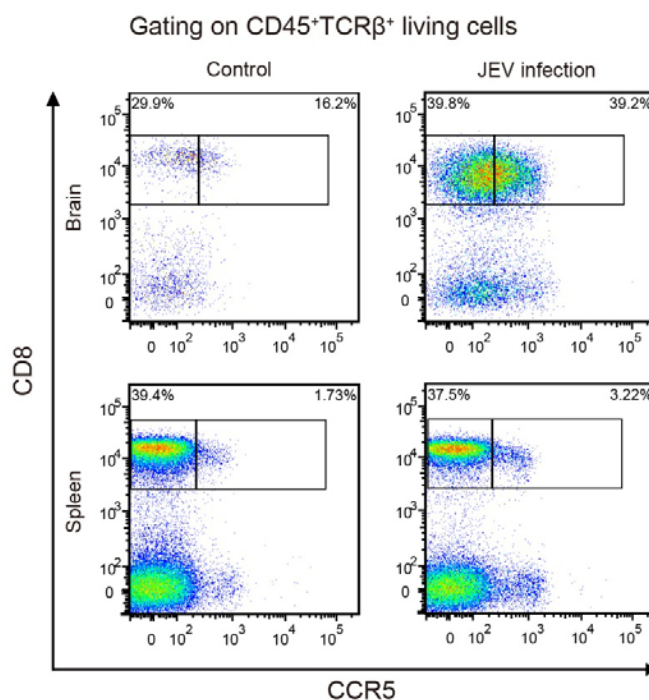


Figure S1. Flow cytometric analysis of CD8⁺CCR5⁺ T cells among mononuclear cells isolated from PBS- and Japanese encephalitis virus (JEV)-infected mice.

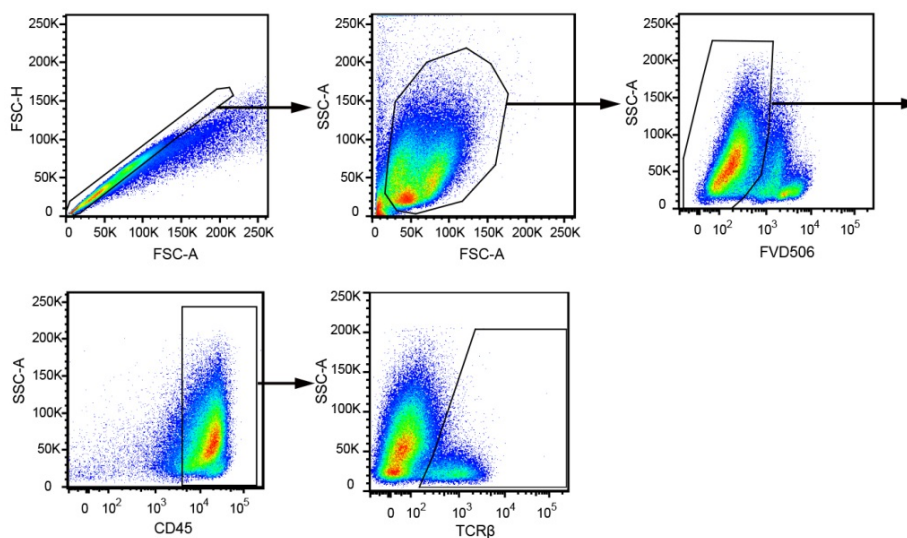


Figure S2. Mononuclear cells from PBS- and Japanese encephalitis virus (JEV)-infected mice were isolated and gated based on $CD45^{+}TCR-\beta^{+}CD8^{+}$ T cells.

Table S1. List of primers used in this study.

| Gene list | Sequence (5' - 3') |
|----------------------|---------------------------|
| <i>JEV-C</i> forward | GGCTCTTATCACGTTCTTCAAGTTT |
| <i>JEV-C</i> reverse | TGCTTCCATCGGCCYAAAA |
| <i>Gapdh</i> forward | TGAAGCAGGCATCTGAGGG |
| <i>Gapdh</i> reverse | CGAAGGTGGAAGAGTGGGAG |
| <i>Ccl2</i> forward | AAA AACCTGGATCGGAACCAA |
| <i>Ccl2</i> reverse | CGGGTCAACTTCACATTCAAAG |
| <i>Ccl3</i> forward | CCAAGTCTTCTCAGCGCCAT |
| <i>Ccl3</i> reverse | GAATCTTCCGGCTGTAGGAGAAG |
| <i>Ccl5</i> forward | CCCTCACCATCATCTCACT |
| <i>Ccl5</i> reverse | CTTCTTCTCTGGGTTGGCAC |
| <i>Ccr2</i> forward | CTGCCTCCACTCTACTCCC |
| <i>Ccr2</i> reverse | TACTCACCCAGAAACCCTT |
| <i>Ccr5</i> forward | GGGTCAGTTCGGACCTATA |
| <i>Ccr5</i> reverse | CGACTTCTCGCACTGACTA |