

VIROLOGICA SINICA

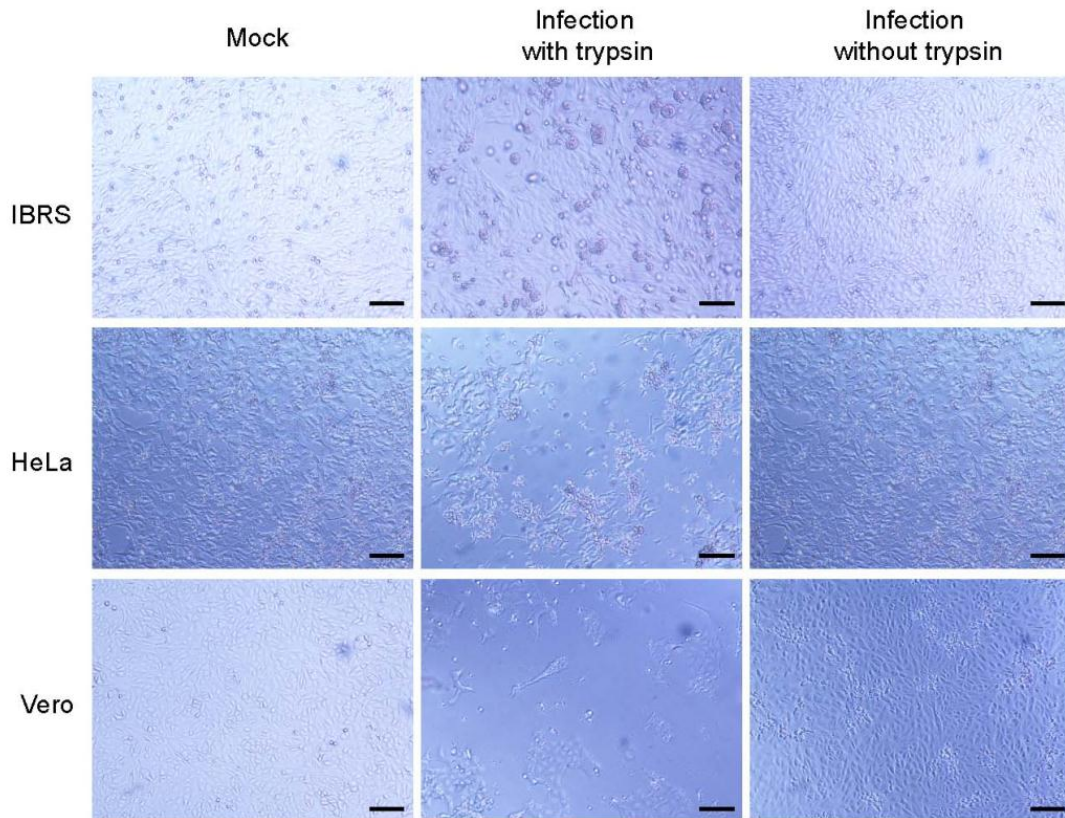
## Electronic Supplementary Material

### **Broad Cell Tropism of SARS-CoV *In Vitro* Implies Its Potential Cross-Species Infection Risk**

**Yun Luo<sup>1,2</sup> • Ying Chen<sup>1,2</sup> • Rong Geng<sup>1,2</sup> • Bei Li<sup>1</sup> • Jing Chen<sup>1,2</sup> • Kai Zhao<sup>1,2</sup> • Xiao-Shuang Zheng<sup>1,2</sup> • Wei Zhang<sup>1</sup> • Peng Zhou<sup>1</sup> • Xing-Lou Yang<sup>1</sup> • Zheng-Li Shi<sup>1</sup>✉**

1. CAS Key Laboratory of Special Pathogens and Biosafety, Wuhan Institute of Virology, Center for Biosafety Mega-Science, Chinese Academy of Sciences, Wuhan 430071, China.
2. University of Chinese Academy of Sciences, Beijing 100049, China.

Supporting information to DOI: 10.1007/s12250-020-00321-3



**Fig. S1** Cytopathic effects observed on SADS-CoV infected IBRS, HeLa and Vero cell lines. CPE was observed in infected IBRS, HeLa and Vero cell lines 72 hpi in the presence of trypsin. Scale bars, 200  $\mu$ m.