

Electronic Supplementary Material

The Susceptibility of Primary Dermis Fibroblasts from the Chinese Tree Shrew to Human Cytomegalovirus Infection

Shu-Wei Dong^{1, #}, Ling-Shuai Jiao^{1, #}, Ming Yang^{1, #}, Ying-Liang Duan², Yi-Bo Chen¹, Fei Zhao³, A-Mei Zhang¹, Li Liu¹, Min-Hua Luo^{3, ✉}, Xue-Shan Xia^{1, ✉}

1. Faculty of Life Science and Technology, Kunming University of Science and Technology, Kunming 650500, China

2. The Key Laboratory of Tropical and Subtropical Animal Viral Diseases in Yunnan province, Kunming 650224, China

3. State Key Laboratory of Virology, Wuhan Institute of Virology, Chinese Academy of Sciences, Wuhan 430071, China

Supporting information to DOI: 10.1007/s12250-019-00106-3

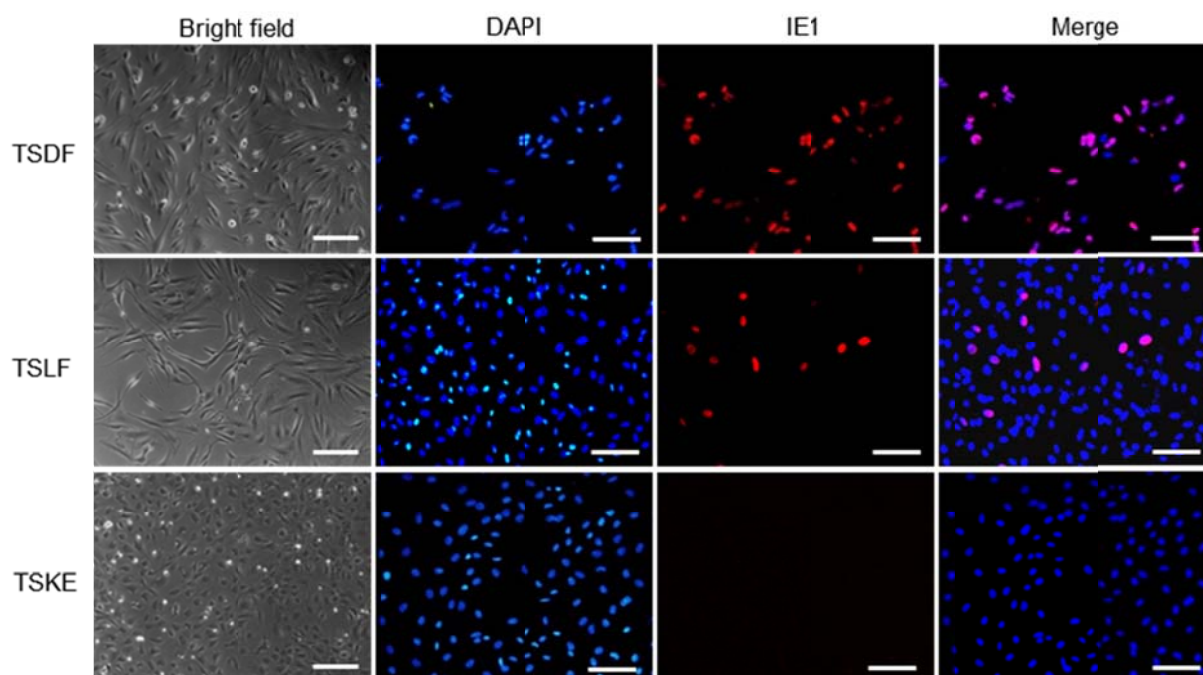


Fig. S1 IE1 expression in primary tree shrew cells. The red fluorescence marked IE1 and DAPI marked nuclear. Bar = 100 μ m.